

BOOKS2KENYA

TURN UNWANTED BOOKS INTO WANTED BOOKS...AND... VISIT KENYA!



UK libraries throw out thousands of books every year, yet libraries in Kenya are desperate for fresh books.

BOOKS2KENYA will:

- * Collect unwanted books from libraries and personal collections
- * Arrange shipment to Naivasha, Kenya
- * Be part of a team of volunteers to help the local library unpack and distribute the books, and re-decorate the library.



The visit to Kenya will include a safari to view Kenya's magnificent wildlife and a visit to a street children's rehabilitation centre

COLLECT BOOKS

Let us have your good condition, unwanted books

MAKE A DONATION

Help with costs of shipping and paint

www.justgiving.com/books2kenya

VISIT KENYA: 9TH-18TH NOVEMBER 2012

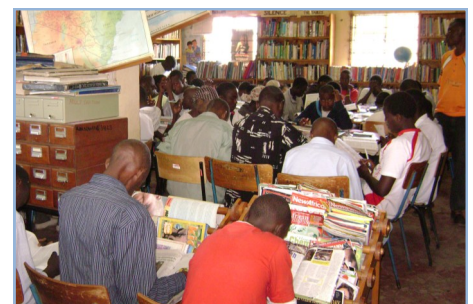
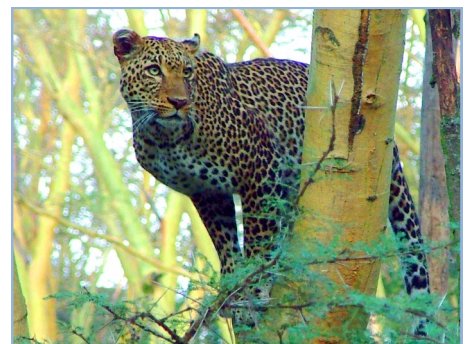
- Unpack books
- Distribute them to local people
- Help paint the library
- Visit a street children rehabilitation centre
- See Kenya's amazing wildlife

More information: contact Kofo at the CCF on 0207 984 8236 or email CCFadmin@conservatives.com

**Conservative
Christian Fellowship**
Making an impact



Footsteps International
Registered charity 1091026
Caring for street children
in Kenya



COLLECT BOOKS

WHY COLLECT BOOKS?

In the UK, millions of books are destroyed every year. Yet in Kenya, people are desperate to have books to read. Books2Kenya will ship unwanted books in the UK to the Naivasha Library in Kenya so that they can be given a new lease of life.

What kind of books do you need?

All kinds of books - novels, biographies, children's books, encyclopaedias, etc. In fact any books you would find in a UK library.

WHY NAIVASHA?

Because the CCF has good contacts there and the Naivasha Library manager has asked for help. We know that the books will be put to good use, thus justifying the cost of the project.

WHERE WILL THE BOOKS COME FROM

- Libraries that are throwing out unwanted books (Bromley & Bexley libraries have already agreed to help).



- Book shops that have surplus books
- Publishers' excess stock
- Personal books that aren't needed any more.

WHAT DO I DO IF I HAVE BOOKS TO DONATE?

Contact Kofo at the CCF on 0207 984 8236 or email CCFadmin@conservatives.com. We will then make arrangements to get the books to the store.

WHERE WILL THE BOOKS BE STORED?

We have been offered storage space in a vacant office and at a warehouse belonging to Computers4Africa in Maidstone.

HOW WILL THE BOOKS GET TO KENYA?

We will use an organisation with experience of shipping to Kenya.

WHAT WILL IT COST TO SHIP THE BOOKS?

It will depend on the number of books we collect, but is likely to be around £3,000.

CAN I CONTRIBUTE TO THE COST OF TRANSPORT?

Yes. Footsteps International, who is a partner in the Books2Africa project has set up a JustGiving page to receive donations. Any surplus

will be donated to the Sunshine Rehabilitation Centre which cares for street children in Naivasha.
www.justgiving.com/books2kenya

CAN I VISIT KENYA TO SEE THE BOOKS BEING PUT TO USE?

Yes! We want to give a group of volunteers the chance to help on the ground in Kenya - read on!

MAKE A DONATION WITH YOUR BOOKS:

www.justgiving.com/books2kenya

PROJECT PARTNERS



Footsteps International

www.footstepsinternational.org

Registered charity 1091026

Caring for street children in Kenya

VISIT KENYA

The visit to Kenya will include a safari to view Kenya's magnificent wildlife and a visit to a street children's rehabilitation centre

FRIDAY

Overnight flight from London to Nairobi.

SATURDAY

Full Kenyan breakfast followed by a visit to Church on the Rock School in the Kware kwa Reuben area of Nairobi (about 10km from Nairobi airport). Be prepared to be challenged by what you see, but inspired by Bernard and Ruth Ndetei who have given their lives to educating the children living in the slums.



School lunch is the main meal of the day for most children at the Church on the Rock School.

After a light lunch in Nairobi, we travel to Naivasha (2 hours) stopping to admire the striking scenery at the edge of the Great Rift Valley.

Check in to our accommodation in an acacia-tree shaded hotel by Lake Naivasha.

SUNDAY

After a relaxing breakfast we can take a short walk to the

edge of Lake Naivasha to see the hippos and admire the huge variety of colourful birds before heading off to church. Be prepared for an enthusiastic but long service (3 hours is the norm) and to be asked to say a few words to introduce yourselves.

After church, we will head to the Sunshine Home (5 km outside Naivasha town) and meet some ex-street boys to find out about their lives (they will also want to know lots about the UK, so be prepared).

The boys lived for varying lengths of time on the streets before being taken into the Sunshine Home where they are given good food, a warm bed and loving care. They are also helped back into education or training at an appropriate level and, where possible, re-connected with their families.

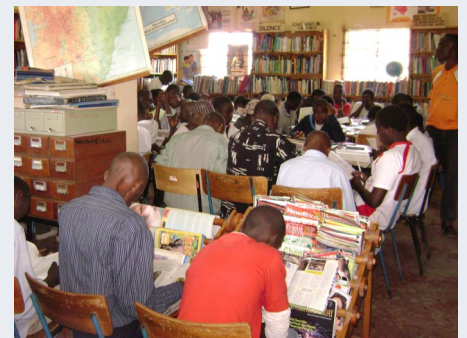
Footsteps International works



Francis Kamau lived on the streets for a year begging for food before coming to the Sunshine Home in 2011.

with Kenyan partners to make the Home a success.

MONDAY



The Naivasha Library is a valuable resource for adults and children, many of whom have limited access to books.

After a relaxing breakfast travel into Naivasha town (10 minutes) to the Naivasha Library to start painting and decorating. We will work hard all day and then head back to the hotel for a sun-downer and shower before our evening meal. As we are based out of the town, we will have to make up our own entertainment before turning in for an early night.

TUESDAY

More painting and decorating today, but if we make good progress we may be able to stop at around 4pm and meet some more of the ex-street boys and find out more about their lives and hopes and dreams.

VISIT KENYA (CONTD)

WEDNESDAY

We should be making good progress with the decorating and should be able to start bringing the books from the container (which will be stored at the nearby Naivasha Polytechnic) and transporting them to the Library (about 5 minutes drive). It will also give us a chance to see the Polytechnic which offers a variety of craft training courses to poorer youngsters which will help them earn a living.

THURSDAY

Today we plan to visit some of the surrounding area to see where the library books will be used. The Naivasha Library runs an active outreach to local communities (including the prison where the prisoners run



We will visit the local people to understand their lives better.

the library inside the jail). This will be a chance to see the countryside surrounding Naivasha and meet some of the local people.

FRIDAY

Our work at the library complete, we will have breakfast

and check out of our hotel and head for Lake Nakuru National Park (about 1.5 hours).

Lake Nakuru National Park is packed with wildlife and is home to the world-famous flamingos (although their numbers fluctuate hugely from year to year). The reserve is home to lion, white rhino, buffalo, leopards and hyenas, as well as more common but very beautiful impala and giraffe.

After a late-morning wildlife drive, we will check in at our hotel for lunch and a relax before heading out for another wildlife drive at around 4pm until dusk at 6.30pm. When we get back we can swap stories about what wildlife we saw and admire each other's photos over a sun-downer before dinner and an early night

SATURDAY

The enthusiastic wildlife spotters among us will be up at 6am for a cup of tea or coffee before setting off on a wildlife



White rhino are an endangered species but thrive at Lake Nakuru.

drive before the day heats up. We may see lions with a fresh kill or hyenas and jackals finishing off a carcass. We will also see an array of beautiful birds before heading back to the hotel for a late breakfast.

After checking out, we will have more time to explore the lake and its wildlife before leaving the National Park be-



Lake Nakuru is home to the world-famous flamingos.

fore our 24 hour pass expires.

After lunch in Nakuru town, we will head for Nairobi and the drop-off at the airport. There will be a few hours to kill before our flight back to the UK (bring a book or two).

SUNDAY

Arrive back in the UK with loads of photos and happy memories of new friends made and good deeds done as well as promises to 'do it again before too long.'

We will try our best to stick to the itinerary.

However, it is subject to change.

QUESTIONS AND ANSWERS

WHAT WILL THE WEATHER BE LIKE?

November is the start of spring and we expect temperatures to be around 24 degrees centigrade during the day, with some short rain in the afternoons. Nights can be chilly so make sure you have some warm clothes with you.

WHERE WILL WE STAY?

We plan to stay in good, tourist class accommodation in Naivasha and a luxury safari lodge in Lake Nakuru.

HOW WILL WE TRAVEL IN KENYA?

Transport will be provided through known, trusted and reliable drivers using safari buses which have opening roofs to help wildlife watching.

IS IT DANGEROUS?

As with most regions of the world, the main risk is probably on the roads which is why we will be taking care to provide good drivers and vehicles. As in any country, you will need to take sensible precautions against theft and mugging. The risk of injury due to wild animals is very low if the local warnings are heeded. We will take notice of any specific FCO advice issued for Kenya.

DO I NEED INSURANCE?

Each individual must arrange insurance cover to meet their own needs. You will be asked

for proof of insurance cover before departure.

CAN I TAKE ANYTHING TO GIVE AWAY TO NEEDY PEOPLE?

If you have spare luggage capacity, feel free to bring good quality children's clothes. Pens pencils and felt-pens are always welcome, but remember that the most important thing you can bring is yourself. The people you meet will treasure the conversations you had with them long after you have left.

DO I NEED ADAPTORS FOR ELECTRICAL EQUIPMENT?

Kenya uses the same voltage and plugs as the UK.

CAN I GET CASH FROM ATMS IN KENYA?

Kenya uses the Kenya shilling and most transactions are done in cash. There are ATM's in Nairobi and Naivasha which allow access to most UK bank accounts. Check with your bank about charges they make for this service. Take \$US80 with you for national park entry.

DO I NEED TO HAVE JOBS?

Check with your GP or a travel clinic and take their advice.

HOW MUCH WILL IT COST?

As a guide, we expect the trip to cost £1,500 including flights. The exact amount will depend on the numbers travelling and the exchange rates

and fares prevailing at the time.

WHAT EXTRAS DO I NEED TO ALLOW FOR?

Visas, medication, insurance, personal expenses, national park fees (\$US 80) lunches, tips and drinks.

DO I NEED A VISA?

Yes. Visit the Kenya High Commission website for information. You will need a passport with at least 6 months validity.

www.kenyahighcommission.net

QUESTIONS NOT ANSWERED?

Get in touch with Kofo at the CCF on 0207 984 8236 or email:

CCFadmin@conservatives.com



BOOKS2KENYA

MONEY MATTERS

HERE ARE SOME IDEAS TO HELP YOU RAISE £1,500 TO TRAVEL TO KENYA:

Create a JustGiving page and ask everyone you know to sponsor your	£500
Sell some of your unwanted stuff on ebay	£200
Organise a monthly sweepstake at work (football, Wimbledon, rugby, Olympics..)	£200
Have friends over for dinner and ask for donations instead of a bottle	£100
Set up a moan/swear jar at work	£ 50
Swap a pint with a glass of water once a week and donate the cash	£150
Cycle or walk to work twice a week -- you'll get fit as well as fundraise!	£100
Donate yourself! Offer your services for donations, whether that's playing a gig, fixing shelves or just picking up the shopping!	<u>£200</u>
You've done it!	£1,500

CAN I MAKE A DONATION OF CASH AS WELL AS BOOKS?

We need funds to cover the cost of transporting the books to Kenya. Our target is £3,000.

Please make a donation using the JustGiving page:

www.justgiving.com/books2kenya

You can gift aid your donation to increase the value. Any excess money raised will go to help street children at the Sunshine Rehabilitation Centre which is run by Footsteps International in partnership with local people.

PAYMENTS FOR THE VISIT TO KENYA

Flights: If enough volunteers travel we will try to negotiate a group-booking discount (this usually requires 10 or more travellers). If we get a group booking, the time and amount of payment will be agreed with the airline and you will be informed of what and when to pay. If no group booking can be made, individuals will be responsible for their own bookings (although the CCF will co-ordinate this as far as possible).

Accommodation and transport in Kenya: Once the amount is finalised you will be notified and you must then make a payment to the Conservative Christian Fellowship.

Personal expenditure: You are responsible for visas, medication, insurance, personal expenses, national park fees (\$US 80) lunches, tips and drinks.

BOOKS2KENYA PROJECT PARTNERS

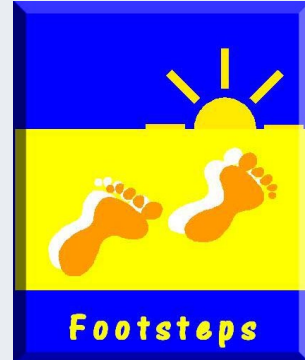
Here are a few of the many organisations who are helping make Books2Kenya a success

**Conservative
Christian Fellowship**
Making an impact



PROJECT LEAD

www.christian-conservatives.org.uk



Footsteps International

www.footstepsinternational.org

Registered charity 1091026

**Caring for street children
in Kenya**



STORAGE AND LOGISTICS

www.computers4africa.org.uk



STORAGE

www.tradermade.co.uk



KENYA NATIONAL LIBRARY SERVICE



**AIC NAIVASHA POLYTECHNIC -
LOGISTIC SUPPORT IN KENYA**

BOOKS2KENYA

APPLICATION TO TRAVEL TO KENYA

BOOKS2KENYA

Please read and complete all sections of the Registration Form and return together with your registration fee of £300 (payable to Conservative Christian Fellowship) to:

Kofo Sanusi

Books2Kenya Project

Conservative Christian Fellowship

30 Millbank

London SW1P 4DP

Tel: 0207 984 8236

Email: CCFadmin@conservatives.com

PLEASE WRITE CLEARLY IN CAPITAL LETTERS

PERSONAL DETAILS

Title **as on passport** (Mr/Mrs/Ms/Miss/other)

Forename(s) **as on passport:**

Surname **as on passport:**

Address

Postcode

Telephone

Email

Date of Birth

Nationality

Emergency contact name:

PASSPORT DETAILS

Passport No.

Issue date

***Your passport must have at least six months to run from the date you return to the UK following this event**

SPECIAL REQUIREMENTS

Do you have any special dietary requirements/food allergies?

Vegetarian Vegan Other (please specify):

Mobile

T-SHIRT SIZE S M L XL

Place of Birth

Marital Status

Emergency contact phone:

Country of Issue

Expiry date*

APPLICATION TO TRAVEL TO KENYA

BOOKS2KENYA

ACCOMMODATION

If there is anyone you would like to share with please write their full name here, otherwise participants will be allocated rooms single rooms which are more expensive than twins/triples).

Name(s):

INSURANCE

You are responsible for organising your own insurance. Please make sure you do this in plenty of time. We will need confirmation that you have adequate insurance prior to departure.

Please note – failure to inform your insurance company of any special requirements or medical conditions may affect any claim you may make.

WOULD YOU LIKE US TO SEND DETAILS TO A FRIEND?

Name

Address

Postcode

Email

Daytime phone

Evening phone

Where did you hear of this event?

DISCLAIMER

This is a privately organised trip and you are travelling at your own risk. No liability will be accepted by the CCF, Footsteps International or any of their partner organisations within the UK or in Kenya.